



SEVA MANDAL EDUCATION SOCIETY'S  
SMT. SUNANDA PRAVIN GAMBHIRCHAND  
COLLEGE OF NURSING

THE INSTITUTION HAS FRIENDLY BARRIER-FREE  
ENVIRONMENT IN THE CAMPUS



WALKER



WHEEL CHAIR



*Sunanda*  
Principal  
Smt. Sunanda Pravin Gambhirchand  
College of Nursing  
338, R. A. Kidwai Road,  
Matunga, Mumbai - 400 019.



SEVA MANDAL EDUCATION SOCIETY'S  
SMT. SUNANDA PRAVIN GAMBHIRCHAND  
COLLEGE OF NURSING



WALKING  
STICK



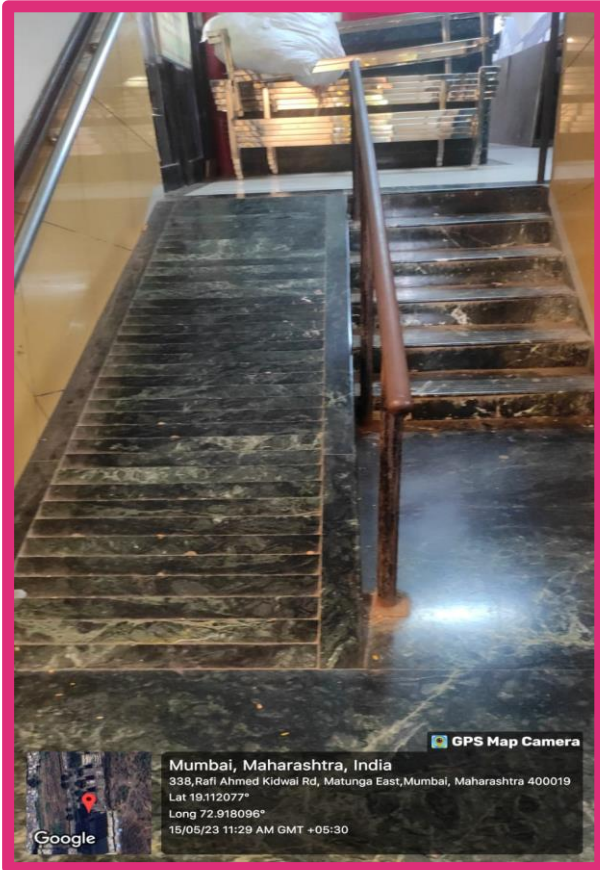
RAMP WITH TACTILE  
PATH FOR EASY ACCESS



*Sunanda*  
Principal  
Smt. Sunanda Pravin Gambhirchand  
College of Nursing  
338, R. A. Kidwai Road,  
Matunga, Mumbai - 400 019.



SEVA MANDAL EDUCATION SOCIETY'S  
SMT. SUNANDA PRAVIN GAMBHIRCHAND  
COLLEGE OF NURSING



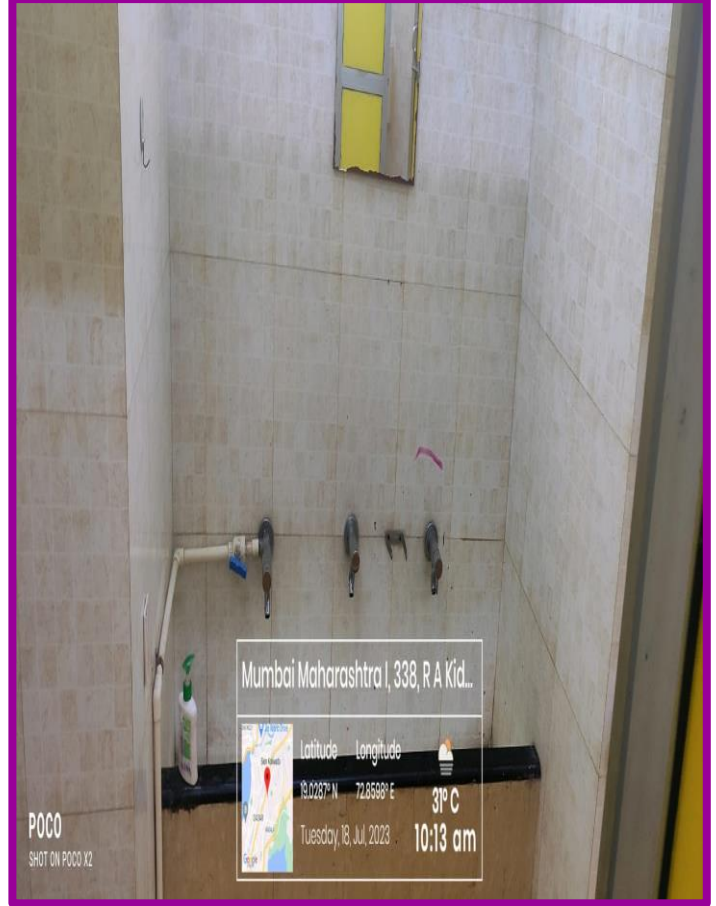
RAMP WITH TACTILE PATH FOR EASY ACCESS



*Sunanda*  
Principal  
Smt. Sunanda Pravin Gambhirchand  
College of Nursing  
338, R. A. Kidwai Road,  
Matunga, Mumbai - 400 019.



**SEVA MANDAL EDUCATION SOCIETY'S  
SMT. SUNANDA PRAVIN GAMBHIRCHAND  
COLLEGE OF NURSING**



**DISABLED FRIENDLY WASHROOM**



*Sunanda Pravin Gambhirchand*  
Principal  
Smt. Sunanda Pravin Gambhirchand  
College of Nursing  
338, R. A. Kidwai Road,  
Matunga, Mumbai - 400 019.